



**The Old Edwardians Association**

**Message from Mrs B Jackson, Headteacher.**



**'Fantastic facilities combining the best of the old with the new'**



In April we were delighted to be handed the keys to our brand new sports facilities located behind the Lewis Building.

As well as a sports hall the facility also boasts a fitness suite and a teaching room with the latest IT facilities.

In May we were also able to move into the first refurbished section of the building. We are delighted with the quality and the new facilities.

These facilities include an Independent Learning Centre for 6th form students and a bespoke family learning

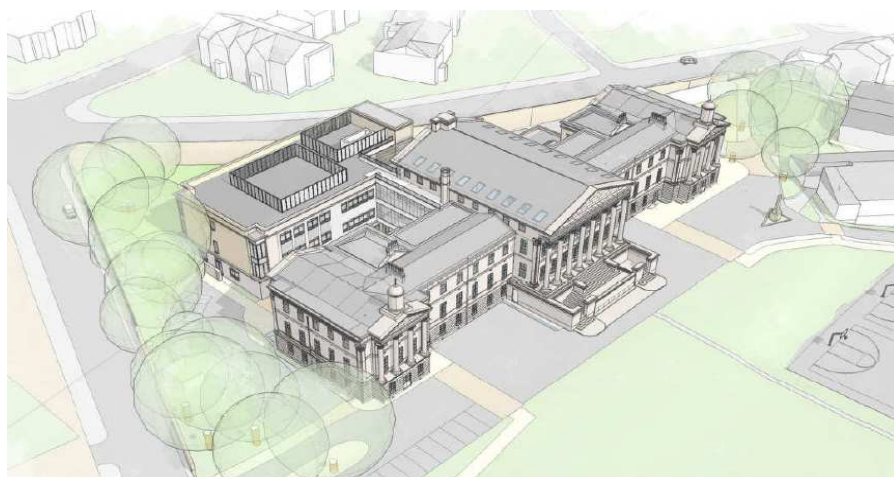
centre.

Pictures of the family learning centre and sports hall feature on this page.

In early November we moved into what is probably the most exciting part of the project, the STEM Centre. (Science, technology, Engineering and Maths). We are delighted that this section of the programme has been delivered well ahead of schedule.

More details of the this can be found on the school website.

**Beverley Jackson**



**Facts and figures**

**November 2010**—work started on site.

**April 2011**—Sports hall completed.

**May 2011**— Refurbishment 1 completed.

**November 2011**— Refurbishment 2 completed. STEM centre opens.

**July 2012**—final completion

[www.kes@sheffield.sch.uk](mailto:www.kes@sheffield.sch.uk)

# John Phillips visits the new premises



On the 14th of October I was delighted to be given a personal tour of the new STEM centre, sports hall and areas of the school that have already been refurbished.

Old Edwardians will, I am sure, be impressed not only with the new state of the art facilities evident in the STEM centre but also with the tasteful way in which the old school has been restored to its former glory. The colours, fixtures and fittings all ensure that none of the history of the school is lost, indeed its history is more evident.

## Fundraising for the fitness suite.

Currently the fitness suite stands empty. The school needs £10,000 to completely kit it out with weight machines, tread mills and other machinery to help keep students fit.

I am hoping that Old Edwardians will be able to rise to the challenge of helping raise this amount of money.



Any Old Edwardian who would like to make a contribution to this fundraising project should send a cheque made payable to King Edward VII School.

The school intends to acknowledge all those who contribute with a special plaque inside the sports hall.

Pictured below is the new Sports Centre and 'bridged' walkway.

J Phillips.



# BUILDING SCHOOLS FOR THE FUTURE



*This project represents probably the most significant change that the buildings of King Edward VII School will ever face.*

*The school is keen to ensure that this exciting stage in the history of the school is recorded for prosperity.*

*Before work started extensive photographs were taken of the building as it was, both inside and out.*

*Thanks to the photographic skills of Karl Gehring, who is a governor of the school, an extensive record is also developing of the work in progress. Some of the many thousands*

*of pictures taken so far feature in this newsletter.*

*A collection of his pictures are on display in school so that current students can enjoy 'a behind the scenes look' of the work in progress.*



*Karl Gehring*

*Once the work is completely finished the school is planning to publish a book recording the whole experience of BSF.*

*The book will be written by John Cornwell, also a governor of the school and author of 'Forty Years on' and 'King Ted's' both books about the history of the school. The new book will of course feature Karl's photos.*



*The photographs really do capture every aspect of the build!*



## REFURBISHMENT OF THE SCHOOL

The original school is being refurbished in three sections. The first section, completed in May 2011, included the refurbishment of the old Gym into an Independent Learning Centre. This centre is for the exclusive use of sixth form students. The library has also been tastefully restored.

The middle section of the school, including the entrance foyer and main hall have just been reopened. The honours boards have all been maintained and the original floors, seating and ceilings lovingly cleaned and re polished .

The area under the main entrance stairs has undergone quite a transformation, the original ceilings, arch ways and stone floors have been exposed and the whole area is now the sixth form common room.

Picture right is a restored corridor in the east wing.



### INVITATION

**On Tuesday 13th December (2.00-3.30pm) the school will be holding a special open afternoon exclusively for Old Edwardians.**

**Mrs B Jackson, headteacher will be available with members of her senior team to escort Old Edwardians around the refurbished areas , sports hall and STEM centre.**

**Refreshments will be available at a small charge.**

**To book please contact the school and ask for Jo Jackson, Heads P.A.**

**0114 2662518  
jjackson@kes.sheffield.sch.uk**

**King Edward VII School  
Glossop Road  
Sheffield  
S10 2PW**



### Problems with the Wall!



With a building project of 20 million pounds and a two year building programme it was perhaps inevitable that at some point a problem would occur!

On Tuesday 11th October a section of wall backing onto Glossop Road collapsed taking with it a considerable piece of pavement. Fortunately no one was injured on site or at the adjacent bus stop.

The repair of the wall is likely to take some time and a section of Glossop Road has had to be closed as a result. The good news is that the problem will not affect the school moving into the new STEM centre.

### Air Raid Shelter



The school is very excited about the possibility of opening up the air raid shelters at the front of the school. Vinci have kindly offered to help finance this but the school also has to do some fund raising. If any Old Edwardians have any suggestions as to how the school could raise money for this Mrs B Jackson would appreciate hearing from you. Pictured left - one of the staircases exposed for initial surveying.